

Installation Instructions

IMPORTANT
Before assembling, carefully
read and follow all the
instructions in this booklet.

1. Planning

Upon receipt of the tub/shower, inventory the components by checking them against Figure 1. Report any shortage or damage immediately.

Each Tub/Shower Includes:

- 1 Tub Base
- 1 Apron
- 2 End Walls
- 3 Vinyl Trim Strips
- 13 Clips
- 14 Screws

The tub may be ordered without the wall enclosures for installation with a paneled or tile wall system. In this case a special trim kit must be ordered separately, for bathtub installation.

The 54" Tub/Shower, Model T-54 is designed with a unique self-trimming edge and can be installed either against the studs or later in the construction cycle after drywall or plaster has been applied.

The tub/shower is designed to be installed in a finished framing pocket as specified in Figure 2.

The tub/shower can be either assembled and plumbed outside of the framing pocket and then inserted into the pocket as a complete unit, or installed in the framing pocket one piece at a time.

The unit must be installed over fire-rated walls when fire-rated construction is specified.

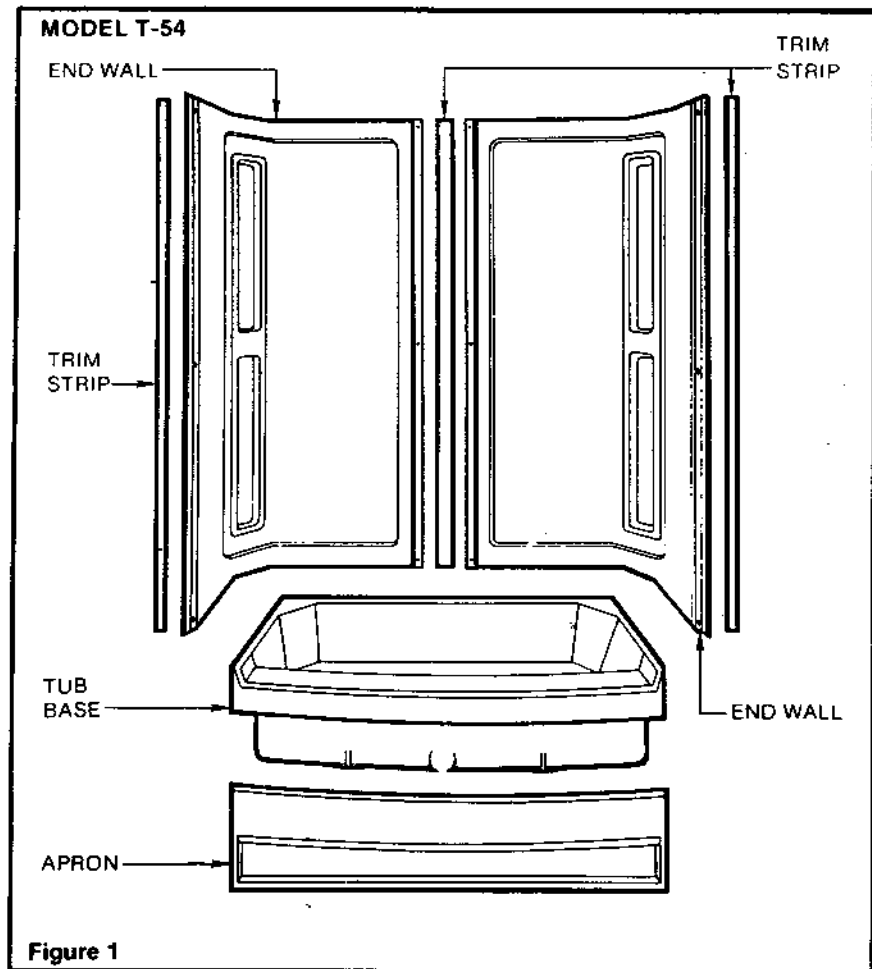


Figure 1

2. Framing Pocket Construction

New Construction

To properly install the tub/shower, a framing pocket must be constructed to the dimensions shown in Figure 2. All framing must be plumb and square. The tub/shower can be either attached directly to the framing studs or installed over the drywall.

-NOTE-

For units installed over drywall, framing pocket dimensions must be increased to accommodate the drywall thickness.

Remodeling

After removing the old unit, measure the framing pocket to be sure that the new unit can be installed in the allotted space, refer to Figure 2 for necessary dimensions. If necessary to construct one of the walls of the framing pocket, install studding per floor plan, Figure 2.

If the tub/shower unit is to be attached directly to the studs, cut away the old wall surface approximately 12 inches above the upper edge of the new tub/shower to permit the use of wider pieces of wall board for easier finishing.

If the backwall of the framing pocket is a fire-rated wall, do not cut away or damage the drywall.

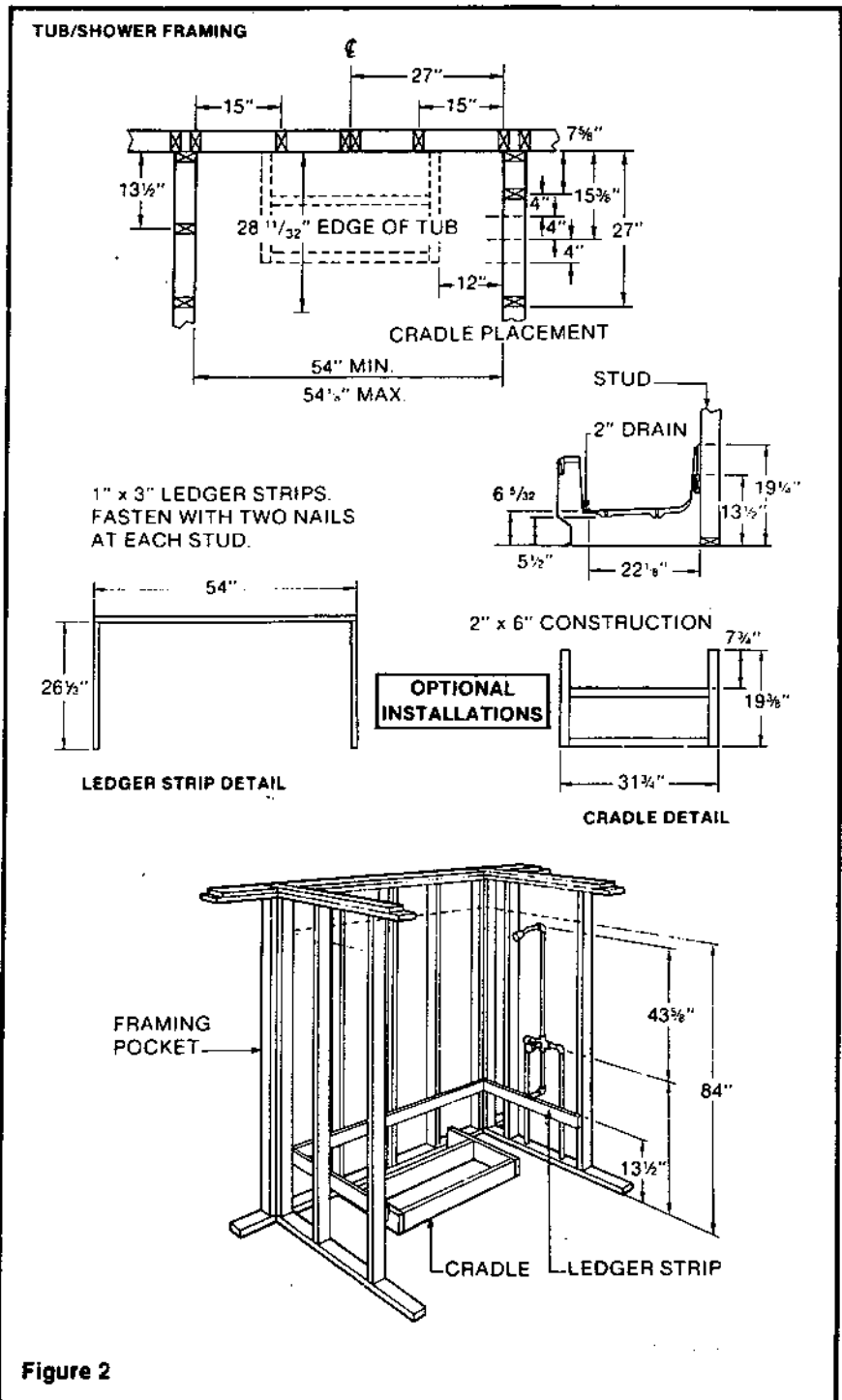


Figure 2

TUB FRAMING

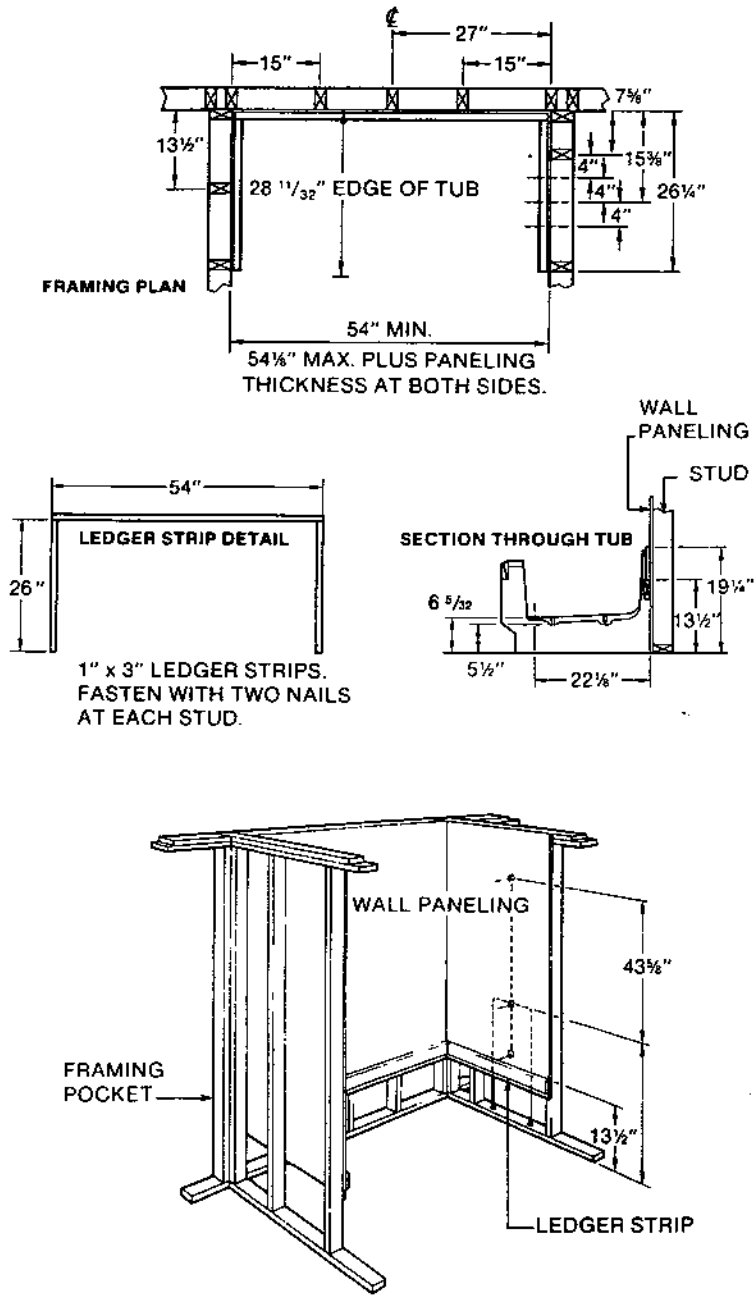


Figure 3

3. Bathtub Support

The bathtub must be supported. When the wall enclosures are used, the bathtub can be supported either by ledger strips attached to the studs or by a cradle made from 2" x 6" lumber. If the wall enclosures are not used, the bathtub *must* be supported by ledger strips.

Ledger Strip Installation

Securely fasten a 1" x 3" wooden ledger strip on three sides of the stud pocket with two nails per stud. Nails must penetrate framing studs a minimum of 1", refer to Figure 3.

Cradle Fabrication

Fabricate a cradle from 2" x 6" lumber as shown in Figure 2. Position cradle in framing pocket as shown. When the bathtub is installed, the bosses on the tub bottom will rest on the cradle. Use hardwood or metal shims, as necessary to level the cradle.

4. Plumbing Installation

The wall enclosures are designed to permit attachment of the water control valve(s), tub filler spout and shower riser to the wall enclosure prior to its installation on the bathtub. The two wall sections are identical and interchangeable, but become right hand or left hand when drilled for the plumbing fittings.

The center lines and suggested locations of the filler spout, valves and shower riser connection are indicated on the backside of the molded end wall, see Figure 4. Using these locations, drill small ($\frac{1}{8}$ ") pilot holes from the back of the unit. Drill all holes to proper size from front of the unit. Drill a 1" hole at the spout and shower

head locations using a 1" hole saw, locating from the pilot holes. The openings for the valve can be determined from the instructions for the valve to be installed. Three valve opening locations are indicated to accommodate either a single control valve, 2 handle valves or 2 handle valves with a diverter.

Riser blocks are molded on the wall enclosure to provide attachment points for pipe straps, see Figure 4. Drill pilot holes for the strap attaching screws (use #6 screws and a 0.116" diameter pilot hole. Screws not provided).

CAUTION
Use a stop on the drill to prevent drilling completely through the wall.

After drilling holes in the wall enclosure, the spout, valve(s) and shower riser can be attached to the wall enclosure either outside of the recess or after the tub/shower assembly has been installed in the recess.

5. Drain Installation

The overflow assembly and drain can be attached to the tub before it is installed in the recess or in a later operation after the tub and wall assembly have been installed. The trap and drain lines can be mounted either above or below the floor level, see Figure 5.

6. Tub/Shower Assembly

The bathtub and wall enclosures can be either assembled and then inserted into the framing pocket, or assembled in the framing pocket one section at a time.

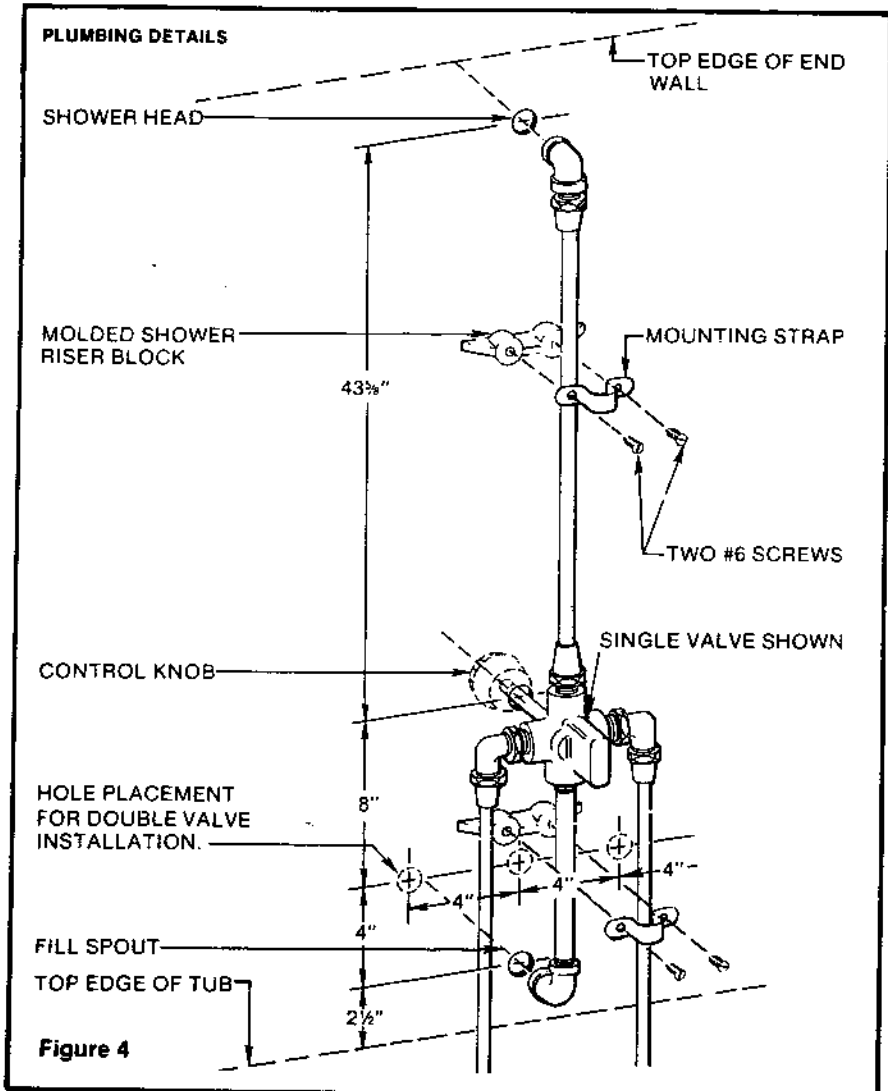


Figure 4

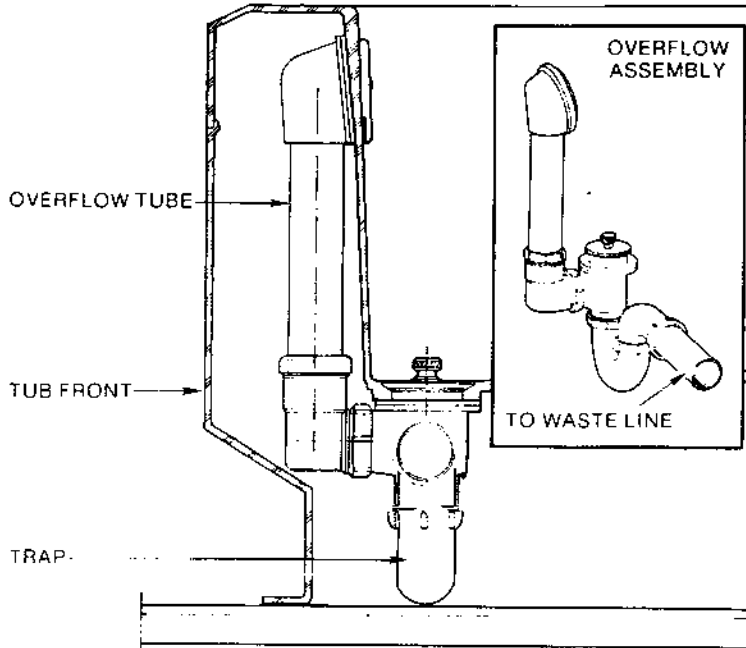
-NOTE-
The plumbing may have to be removed from the wall enclosure to provide clearance for inserting the assembled tub/shower.

- Fill the bathtub alignment channel with mildew resistant sealant.

-NOTE-
Be sure to caulk along the corner soap dish as illustrated in Figure 6.

To attach the wall enclosures to the bathtub, proceed as follows:

**ABOVE THE FLOOR DRAIN
USING THE APRON**



**THROUGH THE FLOOR DRAIN
USING THE APRON**

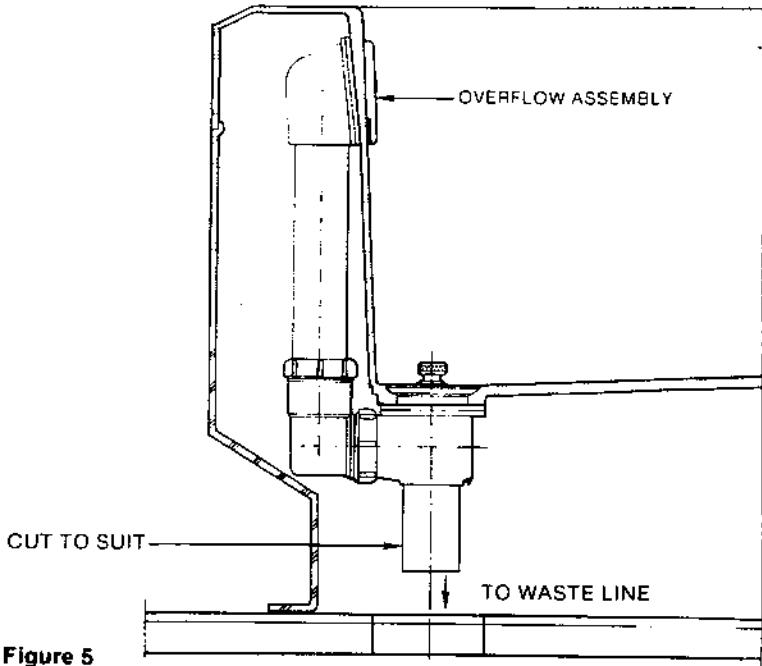


Figure 5

- Set the plumbing wall enclosure in place in the tub alignment channel. Then set the other enclosure in place with rear vertical edges abutting.
- Clip rear vertical edges together with three clips.
- Clip wall enclosures to bathtub at recessed areas in tub and wall flanges.
- Surface caulk all horizontal seams between walls and tub. Do not caulk vertical joint.

Slide the assembled tub/shower into framing pocket until the front edges of the walls contact the front studs of the pocket and the rear edge of the tub firmly contacts the rear wall of the recess.

-NOTE-

Be sure the bathtub is supported by its alignment channel on three sides if ledger strips are used, or by bosses on the tub bottom if cradle is used.

To assemble the tub/shower in the framing pocket:

- Slide bathtub into position on either the ledger strips or cradle, until tub is tight against the rear wall of the pocket.
- Install the enclosure walls as outlined in previous paragraphs.

7. Attaching Wall Enclosures to Framing Pocket

Attach the wall enclosures to the framing members with all of the 12 screws supplied. Shim where necessary between unit and studs to prevent joint separation. Use 3 screws at the front of each wall joint and at center of each back wall, see Figure 7. Note that screws along front edge insert at 45° angle to face of studs, see Figure 7.

8. Water Supply Lines

Connect the water supply lines at this point in the installation, see Figure 8.

-NOTE-

Supply lines for a single control valve (shown) are approximately 8" longer than for a dual control valve.

9. Installation of the Tub Apron

If drain and trap have not previously been installed, complete this operation now.

Install the tub apron. Using the finger holes to hold the panel, insert it at a slight angle, top edge first with the bottom edge toward the installer. Push the panel upward and forward to engage the panel in the retainers provided. Align center of panel first, then outside edges. Push the panel inward until the panel is plumb. Hold tight against tub skirt. Insert a retaining screw into the studs through each of the holes provided at the outer edge of the panel.

GENERAL ASSEMBLY

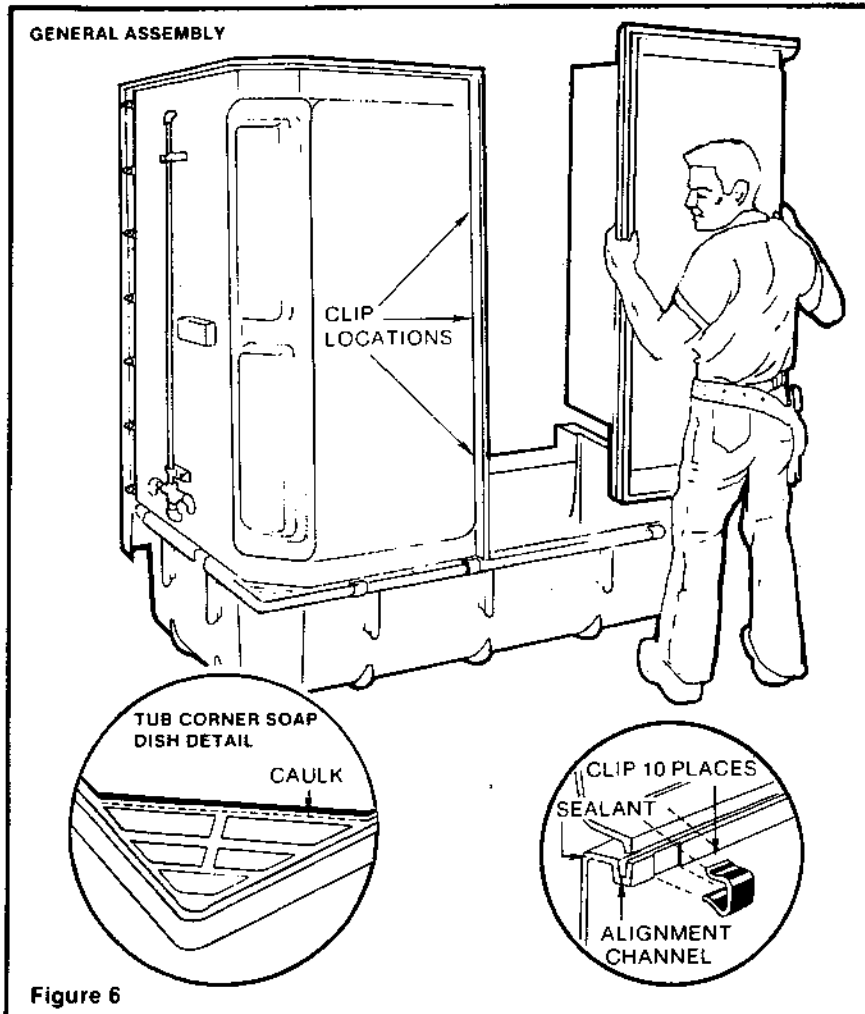


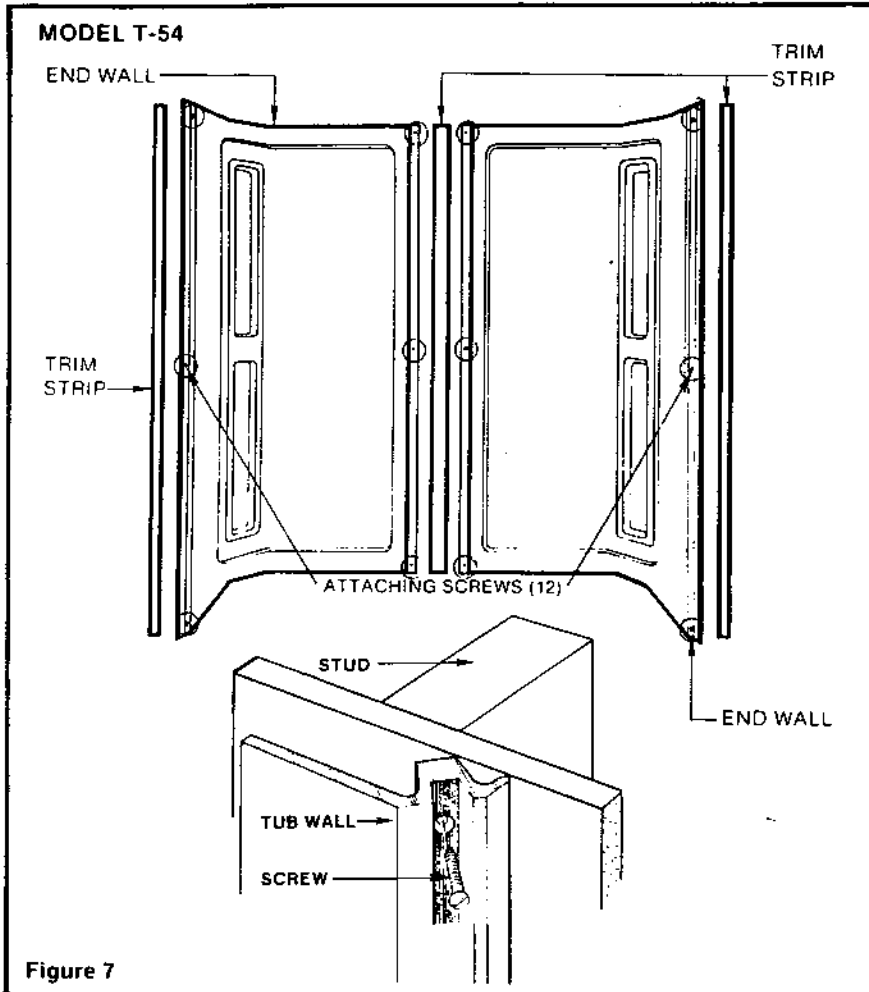
Figure 6

-NOTE-

Kickplate or baseboard cannot be removed if drywall is added after installation.

10. Finish Sealing

Mildew resistant sealant may be used to seal external seams. If the unit has been installed over a finished wall, the only finishing required is spackling any voids between the unit and the walls, see Figure 11.



If the unit has been installed on the studs, it will be necessary to plaster or drywall up to the unit. Drywall above the unit should be set in a water resistant sealing compound using the factory edge (paper bound) against the unit, see Figure 11.

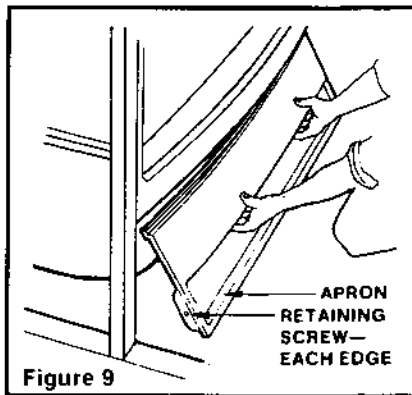
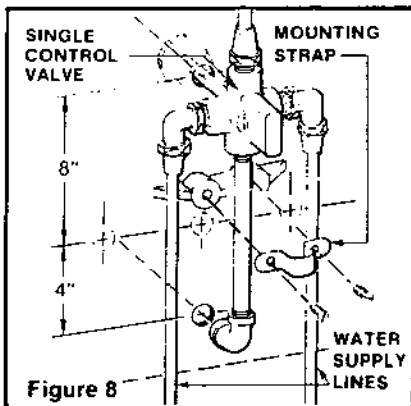
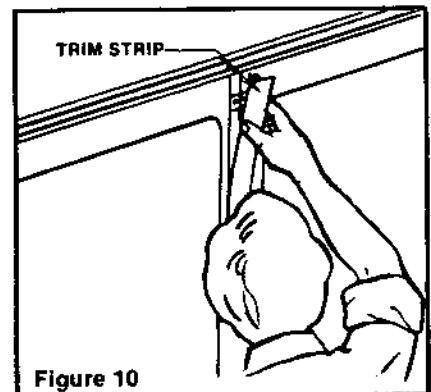
The wallboard should be applied against the vertical edges of the unit in a similar manner.

Apply water resistant sealant along the top of the walls and sides.

Install faucets and shower head.

11. Finish Trim

Install finish plumbing parts and insert vinyl cover strips over joint at center of back wall and at each of the attaching edges to conceal the attaching screws.



12. INITIAL CLEANING

To remove typical dirt and grime left from construction:

- Remove any loose debris from the surface prior to cleaning.

- If possible, soak bathing unit with warm water and mild detergent to loosen remaining soil.
- Drain unit. If soil remains, clean the area that is stained with a non-abrasive multi-purpose cleaner. Rub the area with a non-abrasive applicator made of nylon, polyethylene or polyester (i.e. Bathtub Scrub™ applicator by 3M Company).
- Remove nail rust with Bar Keepers Friend Cleanser®.

During construction or remodeling things such as:
 Tar (Asphalt) Ceramic adhesive
 Paint (oil base) Vinyl adhesive

can be removed with:
 Acetone
 MEK (methyl Ethyl Ketone)
 Turpentine
 Xylene
 Toluene

Saturate a clean white cotton cloth with one of the above solvents, rub the affected area lightly until the residue disappears. These solvents are highly flammable and should be used sparingly. Work in a well ventilated area. DO NOT SMOKE while using these solvents and do not work near an open flame. Solvents should not be allowed to go down the drain or come in contact with a plastic drain grate, pipe or fittings. Exercise extreme caution and KEEP OUT OF REACH OF CHILDREN. These solvents can be purchased in your local hardware store.

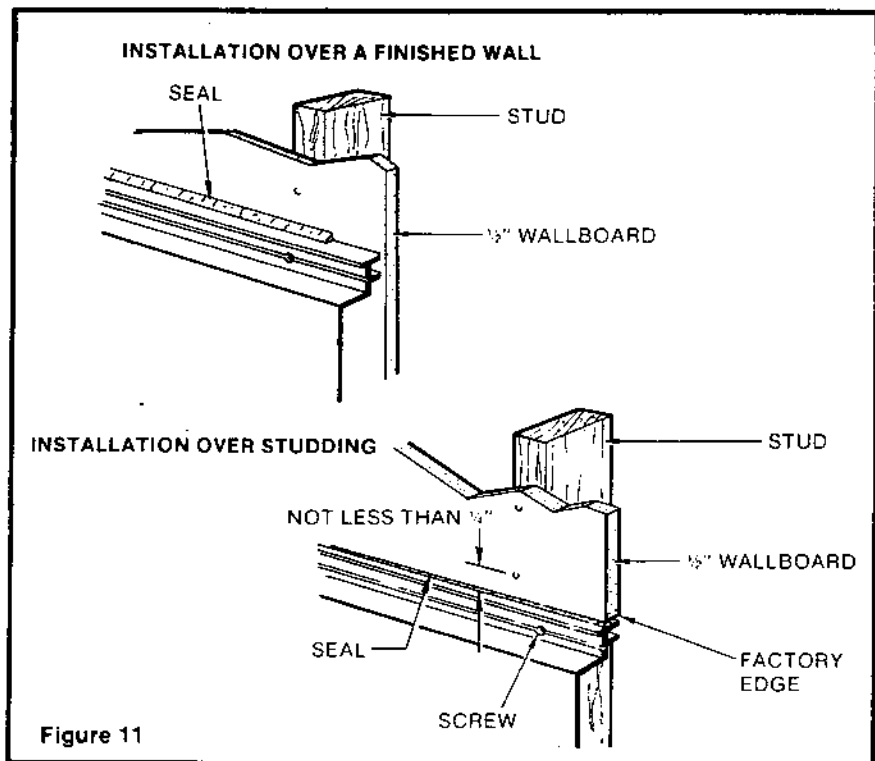


Figure 11

13. REGULAR CLEANING

Sterling Plumbing Group recommends the use of one of the following cleaning products or multi-purpose cleaners for regular cleaning (weekly) of our VIKRELL Swirl Gloss bathing products.

Spic N Span Powder
 Top Job
 Mr. Clean® Soft Abrasive Cleanser
 Safer for Surfaces Comet®

WARNING

Constant use of abrasive cleaning agents can result in surface dullness and discoloration.

FOLLOW MANUFACTURER'S DIRECTIONS WHEN USING CLEANING AGENTS

Rust/Mineral Deposits
 To remove tough stains, rusts and mineral deposits Sterling Plumbing Group recommends the use of "Bar Keeper's Friend®". CAUTION! This product is not to be used for regular cleaning.

SP **STERLING**
 PLUMBING GROUP, INC.
 1375 Remington Road, Schaumburg, Illinois 60173